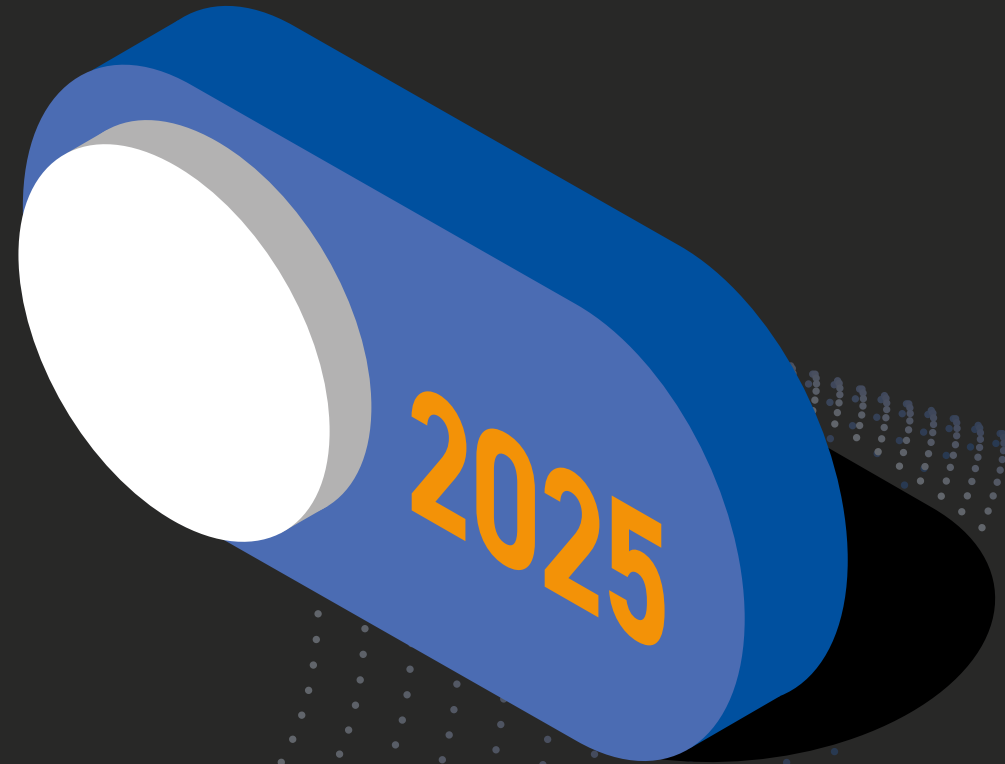




The PSTN Switch Off

Your Replacement Guide



The PSTN Switch Off is just around the corner

In 2025, the infrastructure behind the traditional telephone lines we rely on is going to be retired, and even sooner in 2023, stop sells will mean customers won't be able to take out or add to their existing products.

But it isn't just phones that are going to need replacing. The technology behind the PSTN supports several other services and devices.

Choose a category, then click the office floors on the right to see which devices will be affected when the Switch Off happens. This will help you prepare for your business' digital future.

Select a category ↓

Phone Systems

Broadband/WiFi

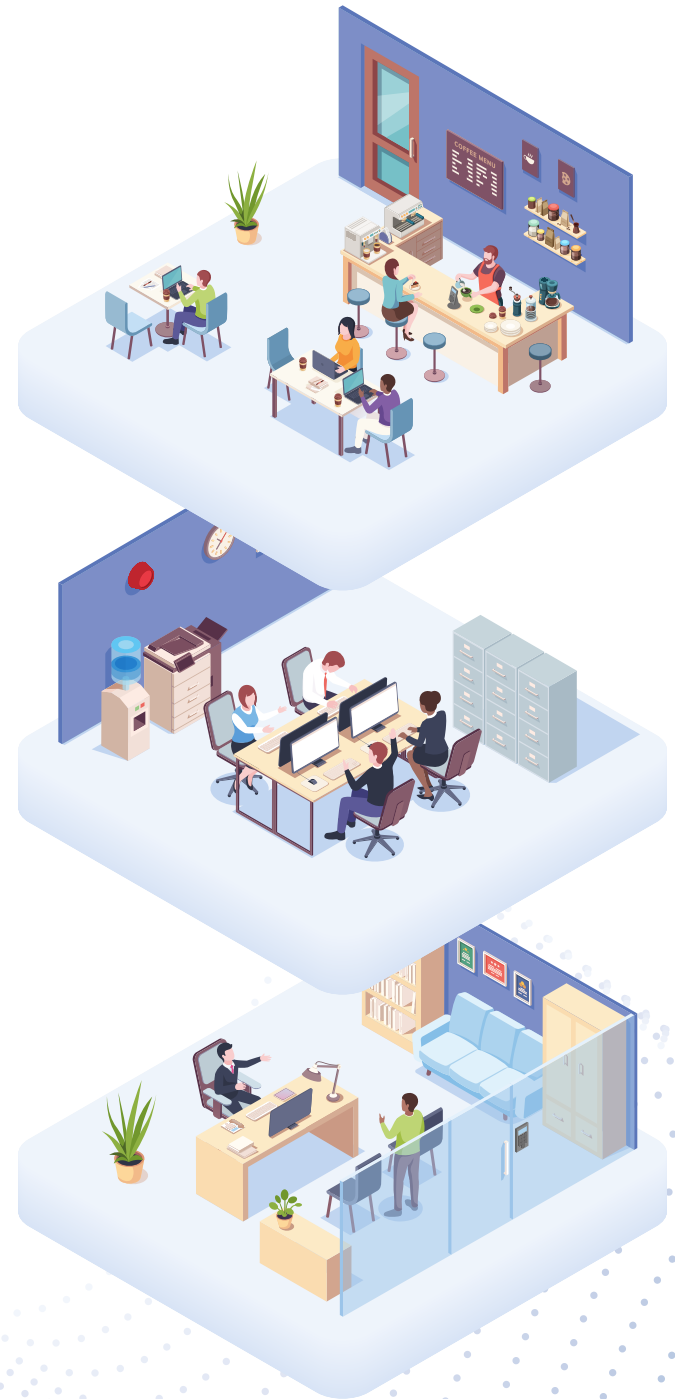
Other Devices

Phone Systems

Broadband/WiFi

Other Devices

Back



Phone Systems

[Select an office floor to see more →](#)

Traditional telephony is going to be affected by the Switch Off. When the stop sell comes around in 2023, you'll no longer be able to take out new lines so be mindful that when your contract is up for renewal, you'll probably need to make the switch.

However, there are plenty of hosted telephony alternatives that your business can upgrade to now. Many businesses have already moved over, benefiting from solutions that are better quality, more reliable, and usually more cost-effective.

SIP Trunking

Not quite ready to leave your legacy telephone system behind? SIP Trunking could be just for you. This solution combines VoIP technology with your existing on-premise telephone system (PBX) to preserve your current features, numbers and call quality while adding the benefits of a hosted voice solution.

Hosted

Step into the future with hosted telephony. Hosted solutions, also known as Voice over Internet Protocol (VoIP), are cloud-based meaning there's no need for a physical telephone system on your premises. Your calls are transmitted as data over the internet via a highly resilient and secure network.

The results are better quality calls, smaller bills, and a whole host of features. VoIP solutions are also scalable and can grow with your business. If you'd like to find out more about our solutions, check out our page on Daisy Hosted Voice or, if you're a microbusiness, Daisy PhoneLine+ offers a service tailored to you.



[Phone Systems](#)

[Broadband/WiFi](#)

[Other Devices](#)

[Back](#)

Phone Systems

Select an office floor to see more →

Traditional telephony is going to be affected by the Switch Off. When the stop sell comes around in 2023, you'll no longer be able to take out new lines so be mindful that when your contract is up for renewal, you'll probably need to make the switch.

However, there are plenty of hosted telephony alternatives that your business can upgrade to now. Many businesses have already moved over, benefiting from solutions that are better quality, more reliable, and usually more cost-effective.

SIP Trunking

Not quite ready to leave your legacy telephone system behind? SIP Trunking could be just for you. This solution combines VoIP technology with your existing on-premise telephone system (PBX) to preserve your current features, numbers and call quality while adding the benefits of a hosted voice solution.

Hosted

Step into the future with hosted telephony. Hosted solutions, also known as Voice over Internet Protocol (VoIP), are cloud-based meaning there's no need for a physical telephone system on your premises. Your calls are transmitted as data over the internet via a highly resilient and secure network.

The results are better quality calls, smaller bills, and a whole host of features. VoIP solutions are also scalable and can grow with your business. If you'd like to find out more about our solutions, check out our page on Daisy Hosted Voice or, if you're a microbusiness, Daisy PhoneLine+ offers a service tailored to you.



Phone Systems

Broadband/WiFi

Other Devices

Back

Phone Systems

Select an office floor to see more →

Traditional telephony is going to be affected by the Switch Off. When the stop sell comes around in 2023, you'll no longer be able to take out new lines so be mindful that when your contract is up for renewal, you'll probably need to make the switch.

However, there are plenty of hosted telephony alternatives that your business can upgrade to now. Many businesses have already moved over, benefiting from solutions that are better quality, more reliable, and usually more cost-effective.

SIP Trunking

Not quite ready to leave your legacy telephone system behind? SIP Trunking could be just for you. This solution combines VoIP technology with your existing on-premise telephone system (PBX) to preserve your current features, numbers and call quality while adding the benefits of a hosted voice solution.

Hosted

Step into the future with hosted telephony. Hosted solutions, also known as Voice over Internet Protocol (VoIP), are cloud-based meaning there's no need for a physical telephone system on your premises. Your calls are transmitted as data over the internet via a highly resilient and secure network.

The results are better quality calls, smaller bills, and a whole host of features. VoIP solutions are also scalable and can grow with your business. If you'd like to find out more about our solutions, check out our page on Daisy Hosted Voice or, if you're a microbusiness, Daisy PhoneLine+ offers a service tailored to you.



Fax Machines

Fax machines often use analogue lines, so it's important to look into your options before the PSTN switches off if you want to continue using them.

Office



Phone Systems

Broadband/WiFi

Other Devices

Back

Broadband/WiFi

Select an office floor to see more →

Most broadband ADSL and FTTC services are supported by single analogue lines, so when these are turned off, your broadband connection will also cease.

There are plenty of options that will ensure your business stays connected beyond 2025. Here are the solutions you may be able to switch to right now:

SOGEA

Single Order Generic Ethernet Access or SOGEA is an option that gives you broadband without the need for a telephone line. It's a close alternative to FTTC broadband and gives your business a fast, reliable connection without compromising on quality.

As it's provisioned on a single order which doesn't include voice services, you'll require a separate hosted voice or VoIP solution if you still want telephony. Luckily, SOGEA is perfect for the adoption of VoIP.

FTTP

If your business needs an even faster connection, FTTP is for you. Standing for Fibre to the Premises, FTTP uses fibre cables for the entire length of the journey. That means no copper wires and virtually no slowdown in speeds or drops in quality.

Our Fibre Flex solution guarantees a symmetrical 200Mb service minimum but can flex up to 1Gb whenever it's possible at no extra cost. Or if you need a service that's even faster, our Full Fibre Ethernet solution offers the best in dedicated internet connectivity.

Full fibre isn't available UK-wide yet, but you can see if your business is in a full fibre enabled area with our postcode checker now.



Phone Systems

Broadband/WiFi

Other Devices

Back

Broadband/WiFi

Select an office floor to see more →

Most broadband ADSL and FTTC services are supported by single analogue lines, so when these are turned off, your broadband connection will also cease.

There are plenty of options that will ensure your business stays connected beyond 2025. Here are the solutions you may be able to switch to right now:

SOGEA

Single Order Generic Ethernet Access or SOGEA is an option that gives you broadband without the need for a telephone line. It's a close alternative to FTTC broadband and gives your business a fast, reliable connection without compromising on quality.

As it's provisioned on a single order which doesn't include voice services, you'll require a separate hosted voice or VoIP solution if you still want telephony. Luckily, SOGEA is perfect for the adoption of VoIP.

FTTP

If your business needs an even faster connection, FTTP is for you. Standing for Fibre to the Premises, FTTP uses fibre cables for the entire length of the journey. That means no copper wires and virtually no slowdown in speeds or drops in quality.

Our Fibre Flex solution guarantees a symmetrical 200Mb service minimum but can flex up to 1Gb whenever it's possible at no extra cost. Or if you need a service that's even faster, our Full Fibre Ethernet solution offers the best in dedicated internet connectivity.

Full fibre isn't available UK-wide yet, but you can see if your business is in a full fibre enabled area with our postcode checker now.



Tablets

If your WiFi is supported by a single analogue line, you'll need to find a replacement by 2025 if you want to stay online.

Reception

Phone Systems

Broadband/WiFi

Other Devices

Back

Broadband/WiFi

Select an office floor to see more →

Most broadband ADSL and FTTC services are supported by single analogue lines, so when these are turned off, your broadband connection will also cease.

There are plenty of options that will ensure your business stays connected beyond 2025. Here are the solutions you may be able to switch to right now:

SOGEA

Single Order Generic Ethernet Access or SOGEA is an option that gives you broadband without the need for a telephone line. It's a close alternative to FTTC broadband and gives your business a fast, reliable connection without compromising on quality.

As it's provisioned on a single order which doesn't include voice services, you'll require a separate hosted voice or VoIP solution if you still want telephony. Luckily, SOGEA is perfect for the adoption of VoIP.

FTTP

If your business needs an even faster connection, FTTP is for you. Standing for Fibre to the Premises, FTTP uses fibre cables for the entire length of the journey. That means no copper wires and virtually no slowdown in speeds or drops in quality.

Our Fibre Flex solution guarantees a symmetrical 200Mb service minimum but can flex up to 1Gb whenever it's possible at no extra cost. Or if you need a service that's even faster, our Full Fibre Ethernet solution offers the best in dedicated internet connectivity.

Full fibre isn't available UK-wide yet, but you can see if your business is in a full fibre enabled area with our postcode checker now.



Computers

Broadband and WiFi services are often supported by single analogue lines, meaning you may find yourself without internet when the PSTN Switch Off takes place.

Office

[Phone Systems](#)

[Broadband/WiFi](#)

[Other Devices](#)

[Back](#)

Broadband/WiFi

Select an office floor to see more →

Most broadband ADSL and FTTC services are supported by single analogue lines, so when these are turned off, your broadband connection will also cease.

There are plenty of options that will ensure your business stays connected beyond 2025. Here are the solutions you may be able to switch to right now:

SOGEA

Single Order Generic Ethernet Access or SOGEA is an option that gives you broadband without the need for a telephone line. It's a close alternative to FTTC broadband and gives your business a fast, reliable connection without compromising on quality.

As it's provisioned on a single order which doesn't include voice services, you'll require a separate hosted voice or VoIP solution if you still want telephony. Luckily, SOGEA is perfect for the adoption of VoIP.

FTTP

If your business needs an even faster connection, FTTP is for you. Standing for Fibre to the Premises, FTTP uses fibre cables for the entire length of the journey. That means no copper wires and virtually no slowdown in speeds or drops in quality.

Our Fibre Flex solution guarantees a symmetrical 200Mb service minimum but can flex up to 1Gb whenever it's possible at no extra cost. Or if you need a service that's even faster, our Full Fibre Ethernet solution offers the best in dedicated internet connectivity.

Full fibre isn't available UK-wide yet, but you can see if your business is in a full fibre enabled area with our postcode checker now.



Phone Systems

Broadband/WiFi

Other Devices

Back

Other Devices

[Select an office floor to see more →](#)

It's not just traditional telephony that sits on PSTN lines. Other devices such as alarm lines, payment terminals, and security cameras also utilise the network to transfer data. This means when the PSTN is switched off, these devices will cease to work.

If you own any of these devices, you'll need to find out whether they're IP-compatible from the manufacturer. Openreach can also provide line test facilities. If your devices aren't IP-compatible, they'll need to be replaced.

Otherwise, your devices can simply be moved onto a Single Order product. Or if you're looking to go wireless, there's the option of connecting these devices over IoT (Internet of Things) networks using intelligent mobile data.

Our multi-network roaming SIM, Daisy Anywhere, lets you do just that. Rather than being bound to one network, it connects to the strongest network available to give you a reliable data connection without the need for a hardwired solution. And with a real-time usage portal, it's easy to manage your data so you can avoid overage.



[Phone Systems](#)

[Broadband/WiFi](#)

[Other Devices](#)

[Back](#)

Other Devices

Select an office floor to see more →

It's not just traditional telephony that sits on PSTN lines. Other devices such as alarm lines, payment terminals, and security cameras also utilise the network to transfer data. This means when the PSTN is switched off, these devices will cease to work.

If you own any of these devices, you'll need to find out whether they're IP-compatible from the manufacturer. Openreach can also provide line test facilities. If your devices aren't IP-compatible, they'll need to be replaced.

Otherwise, your devices can simply be moved onto a Single Order product. Or if you're looking to go wireless, there's the option of connecting these devices over IoT (Internet of Things) networks using intelligent mobile data.

Our multi-network roaming SIM, Daisy Anywhere, lets you do just that. Rather than being bound to one network, it connects to the strongest network available to give you a reliable data connection without the need for a hardwired solution. And with a real-time usage portal, it's easy to manage your data so you can avoid overage.



Entry Systems

Many entry systems transfer data over PSTN lines, so they'll need to be upgraded before the PSTN is switched off.

Security Cameras

Many security cameras transfer data over PSTN lines, so they'll need to be upgraded before the PSTN is switched off.

Reception

Phone Systems

Broadband/WiFi

Other Devices

Back

Other Devices

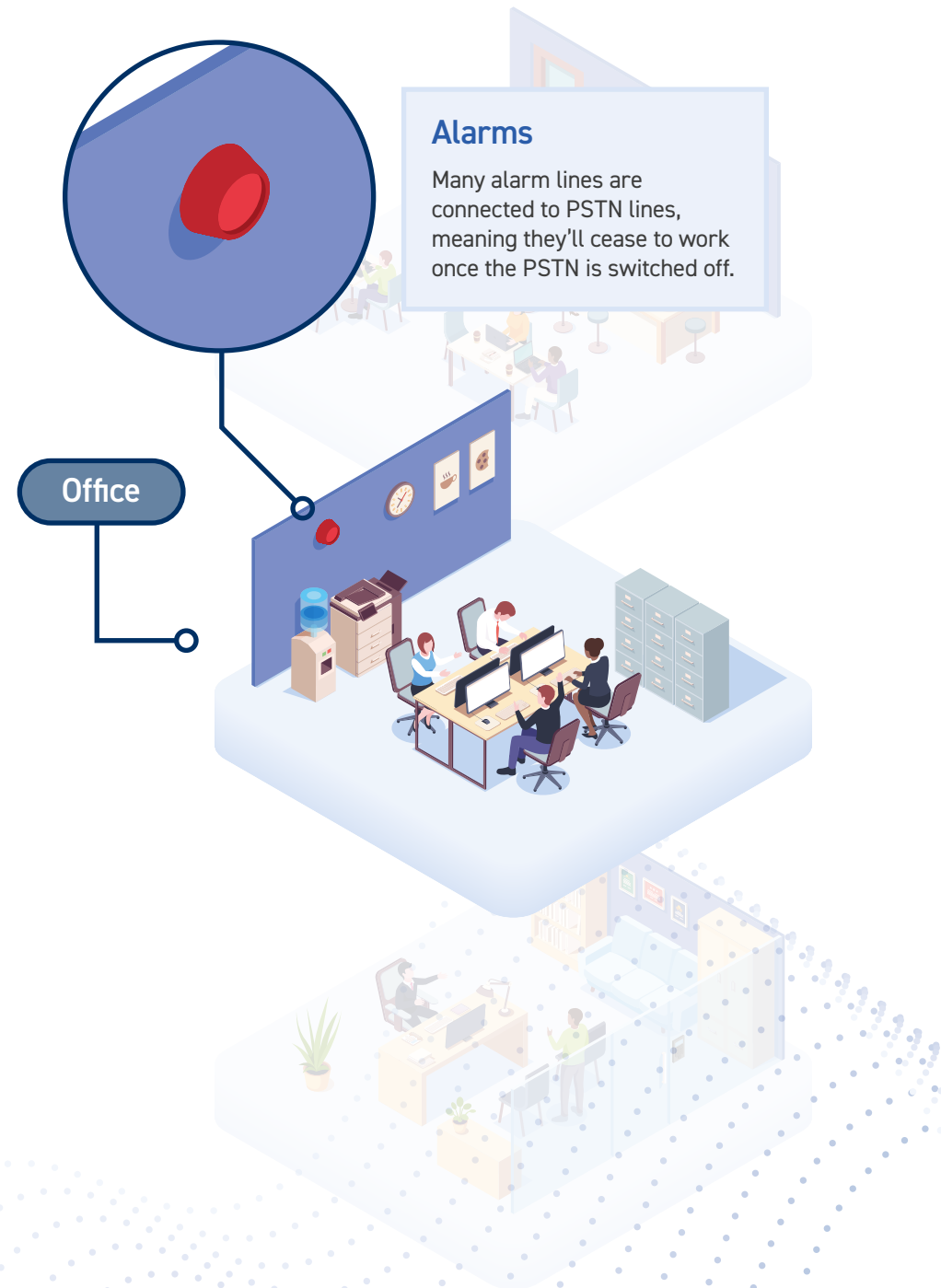
[Select an office floor to see more →](#)

It's not just traditional telephony that sits on PSTN lines. Other devices such as alarm lines, payment terminals, and security cameras also utilise the network to transfer data. This means when the PSTN is switched off, these devices will cease to work.

If you own any of these devices, you'll need to find out whether they're IP-compatible from the manufacturer. Openreach can also provide line test facilities. If your devices aren't IP-compatible, they'll need to be replaced.

Otherwise, your devices can simply be moved onto a Single Order product. Or if you're looking to go wireless, there's the option of connecting these devices over IoT (Internet of Things) networks using intelligent mobile data.

Our multi-network roaming SIM, Daisy Anywhere, lets you do just that. Rather than being bound to one network, it connects to the strongest network available to give you a reliable data connection without the need for a hardwired solution. And with a real-time usage portal, it's easy to manage your data so you can avoid overage.



[Phone Systems](#)

[Broadband/WiFi](#)

[Other Devices](#)

[Back](#)

Other Devices

Select an office floor to see more →

It's not just traditional telephony that sits on PSTN lines. Other devices such as alarm lines, payment terminals, and security cameras also utilise the network to transfer data. This means when the PSTN is switched off, these devices will cease to work.

If you own any of these devices, you'll need to find out whether they're IP-compatible from the manufacturer. Openreach can also provide line test facilities. If your devices aren't IP-compatible, they'll need to be replaced.

Otherwise, your devices can simply be moved onto a Single Order product. Or if you're looking to go wireless, there's the option of connecting these devices over IoT (Internet of Things) networks using intelligent mobile data.

Our multi-network roaming SIM, Daisy Anywhere, lets you do just that. Rather than being bound to one network, it connects to the strongest network available to give you a reliable data connection without the need for a hardwired solution. And with a real-time usage portal, it's easy to manage your data so you can avoid overage.

Canteen

Card Readers


Card readers often rely on analogue lines to transmit data, so you'll need to look into your replacement options before the PSTN switches off.

Phone Systems

Broadband/WiFi

Other Devices

Back



For more information and help please visit: <https://www.cloudsolutions4biz.com/bt-isdn-switch-off>